

Oxfordshire's Local Area Agreement

Annual Refresh December 2006

1. Inclusion of new outcomes (including the Mandatories)

Mandatory outcomes (as per LAA guidance)	Indicator(s)	Baseline	Targets	
			2007/08	2008/09
Improve health and reduce health inequalities	Spearhead Areas: Reduce health inequalities between the local authority area and the England population by narrowing the gap in all-age, all-cause mortality	Not applicable- Oxfordshire is not a spearhead area		
	All other areas (optional for Spearhead Areas) - reduce health inequalities within the local area, by narrowing the gap in all-age, all-cause mortality	Reduce the gap in all-age, all-cause mortality by 10%, as measured by the difference in rates for the top quintile and bottom quintile of all wards in Oxfordshire, from the baseline in 1995-97 of 514.82 to 463.34 by 2009-2011	478.04 [2007-09]	463.34 [2009-2011]
Reduce crime	Reduction in overall British Crime Survey comparator recorded crime. Targets must be those as agreed between crime and drugs partnerships and GOs to support delivery of Home Office PSA1. A County level target will need to reflect the targets of the crime and drugs partnerships, and any aggregation will need to be agreed with the GO.	2003/04 baseline 30,240 crimes	25,366 crimes (Reduction of 4,874 crimes)	Awaiting advice from Comprehensive Spending Review 2007
	Reduce the proportion of adult and young offenders, and prolific and other priority offenders who re-offend. (Existing stretch target)	Covered by existing stretch targets SSC 1+3 (PPOs - baseline 479 convictions; Re-offending by young offenders from baseline of 156)	Existing stretch target	Existing stretch targets (PPOs 340 convictions; Young offenders re-offending 144)
Reassure the public, reducing the fear of crime	Reduce the % of people who feel that fear of crime affects their quality of life	Question to be added to 2007 Citizen's Panel Survey. Baseline to be established by six month review	Targets for 07/08 to be advised at the six month review	Target to be advised at six month review.
Reduce the harm caused by illegal drugs	Reduce public perception of local drug dealing and drug use as a problem	To be measured by annual countywide Citizens' Panel survey and by LGUSS 35% residents (2006 Citizens Panel baseline) are worried by people using or dealing drugs in their	2007/08 based on 1% decrease on 2006 baseline	2008/09 based on 2% decrease on 2006 baseline

Mandatory outcomes (as per LAA guidance)	Indicator(s)	Baseline	Targets	
			2007/08	2008/09
		neighbourhood. 18% are aware of seeing people using or dealing in their neighbourhood 2006 Citizens Panel survey LGUSS baseline is 26%. Reduce baselines by 1% per annum.	2007/08 1% decrease in percentage of people who think people using or dealing drugs is a problem	2008/09 based on 2% decrease on 2006 baseline in percentage of people who think people using or dealing drugs is a problem
Build respect in communities and reduce anti-social behaviour	Percentage improvement in the degree to which people feel informed about efforts by the local council to tackle anti-social behaviour	Question to be added to 2007 Citizen's Panel Survey. Baseline to be established during 2007/08 LGUSS baseline figure is 16%	2007/08 1% increase in the number of people who feel very or fairly well informed about efforts by the local council to tackle ASB	2008/09 based on 2% increase on 2006 baseline
	Percentage improvement in the degree to which people feel that in their local area parents take responsibility for the behaviour of their children	Question to be added to 2007 Citizen's Panel Survey. Baseline to be established during 2007/08 LGUSS baseline figure is 47%	1% decrease in the percentage of people who feel that in their local area parents DO NOT take responsibility for the behaviour of their children	2008/09 based on 2% decrease on 2006 baseline
	Percentage improvement in the degree to which people feel that people in their local area treat one another with respect and consideration	Question to be added to 2007 Citizen's Panel Survey. Baseline to be established during 2007/08 LGUSS baseline figure is 33%	1% decrease in the percentage of people who DO NOT feel that people in their local area treat one another with respect and consideration	2008/09 based on 2% decrease on 2006 baseline

Mandatory outcomes (as per LAA guidance)	Indicator(s)	Baseline	Targets	
			2007/08	2008/09
	Reduce people's perceptions of ASB (using the 7 issues stated in the Survey)	To be measured by annual countywide Citizens' Panel survey and by LGUSS. Baseline from 2006 Citizens Panel is a score of 6.82, (this is an average score for each respondent (see Annex 1a) LGUSS baseline figure is 18% (percentage of respondents with a score of 11 or more, where 11 equals a high level of perceived ASB)	1% decrease on Citizens Panel 2006/07 07/08 1% decrease on 06/07 target LGUSS % figure	Based on 2% decrease on 2006 baseline 2008/09 based on 2% decrease on 2006 baseline LGUSS % figure
Empower local people to have a greater voice and influence over local decision making	Percentage of residents who feel they can influence decisions affecting their local area	34% (baseline from unverified data from BVPI survey)	Targets will be set by Stronger Communities Forum by 31st Jan 2007	Targets will be set by Stronger Communities Forum by 31st Jan 2007
	Percentage of people who feel that their local area is a place where people from different backgrounds get on well together	74% (baseline from unverified data from BVPI survey)	Targets will be set by Stronger Communities Forum by 31st Jan 2007	Targets will be set by Stronger Communities Forum by 31st Jan 2007
	An increase in the number of people recorded as or reporting that they have engaged in formal volunteering on an average of at least two hours per week over the past year	21% (baseline from unverified data from BVPI survey)	Targets will be set by Stronger Communities Forum by 31st Jan 2007	Targets will be set by Stronger Communities Forum by 31st Jan 2007
Other new outcomes (including those agreed in relation to any automatically pooled funding)				
Achieve Economic Well-being	Percentage of 16-18 year olds not in education, employment or training	4.6% (2005/06) Data for 06/07 not available	4.1%	3.9%
Reduce waste to landfill and increase recycling	Reduction in the percentage of municipal waste landfilled (pre-existing target)	66.7% (ACTUAL 2005/6) 05/06 tonnage 198,535 tonnes [Data for 06/07 not available. Internal target 06/07 65%]	63.5%	62%

Mandatory outcomes (as per LAA guidance)	Indicator(s)	Baseline	Targets	
			2007/08	2008/09
	Increase in the percentage of municipal waste recycled (pre-existing target)	33.3% (ACTUAL 2005/6) Statutory target 30% PSA target 33% Tonnage non-biodegradable recycled waste in 05/06 – 26,907.57 tonnes LAA Baseline Figure (04/05) – 26,555 [Data for 06/07 not available. Internal target 06/07 35%, projected tonnage with stretch 28,289]	36.5% internal target Projected tonnage with stretch 29,562.25 tonnes	38% (LAA TARGET) Projected tonnage with stretch 30,836 tonnes
Be Healthy	The percentage annual increase in the number of schools with an approved school travel plan (STP) required to achieve 100 percent STP coverage by March 2010. This should be profiled against current number of schools with an approved STP in place and the appropriate delivery point on a trajectory which would achieve 100 percent coverage by 2010.	05/06 38% Target for 06/07 64%	83%	93%
Be Healthy	Reduction in the under 18 conception rate (pre-existing target)	34.3 per 1000 in 2004 (reporting year 2005/06) 28.6 per 1000 in 2006 (=17% reduction from baseline)	25.8 per 1000 in 2007 (=25% reduction from baseline)	17.3 per 1000 in 2010 (=50% reduction from baseline)

2. Negotiated modifications to the existing outcomes framework and targets

Amendments to the existing outcomes framework including any deletions

Reason for amendment	Outcome		Indicator(s)		Targets			
	Existing	Proposal	Existing	Proposal	Baseline	Existing 06/07	Proposal 07/08	Proposal 08/09
Clarify timescale of target	720 adults achieve NVQ level 1 or higher (or equivalent) by August 2009	720 adults achieve NVA level 1 or higher (or equivalent) by end of 2008/09 academic year	No change	No change	No change			

Reason for amendment	Outcome		Indicator(s)		Targets			
	Existing	Proposal	Existing	Proposal	Baseline	Existing 06/07	Proposal 07/08	Proposal 08/09
To establish measurable baseline	Increase access to positive activities	No change	Increase participation in a broad range of high quality activities, both in and out of school, particularly by priority groups.	Increase % young people aged 13-19 participating in Youth Service activity	14% (2005/06)	06/07 14.5%	Proposal 06/07 14.7%	Proposal 08/09 15%
Improve clarity of existing target	Increase the efficiency and gross value added of businesses in the county by reducing their resource costs	No change	No change	No change	Target amended: Achieve a 60% recycling rate with 60 Oxfordshire businesses (previously the number was not specified) taking part in a programme of awareness-raising and support directed at those organisations and businesses willing to be engaged in resource efficiency and waste reduction	No change	No change	No change
To align target with Active People survey and baseline information	Enhance the independence and quality of life for older people and vulnerable people to sustain independent living	No change	Number of adults and older people receiving Direct Payments per 100,000 adult population	Number of adults and older people receiving Direct Payments at 31 March per 100,000 population aged over 18 (age standardised)	Increase by March 2009 the number of adults receiving Direct Payments to 150 per 100,000 adult population from a predicted baseline of 90 per 100,000 in 2005/06, (interim targets: 2006/07:110, 2007/08: 130, 2008/09:150)	No change	No change	No change

Reason for amendment	Outcome		Indicator(s)		Targets			
	Existing	Proposal	Existing	Proposal	Baseline	Existing 06/07	Proposal 07/08	Proposal 08/09
Clarify definition of outcome. Arson relates to Police figures. Primary and Secondary fires relates to Fire and Rescue Service figures which are being used to monitor the target	Reduce the level of arson	No change	No change	No change	Reduction of 10% in the number of primary and secondary deliberate fires by March 2009 from a 2004-05 baseline of 1557	1491	1451	1401
To set baseline and targets	Establishing a countywide common referral and assessment process for preventive services	No change	No change	No change	Fire Service referrals from other agencies from a baseline of 50 referrals per month (resulting in 50 fire risk assessments and 90 smoke alarms fitted). Total 600 per year	640	680	720
					Anchor staying put. Referrals or enquiries received from a baseline Apr-Sept 2006 total enquiries in Oxfordshire = 1617. Total 3200 year	3415	3630	3840
					Electric blanket testing from a baseline of 303 blankets tested in 2004	323	343	363

Reason for amendment	Outcome		Indicator(s)		Targets			
	Existing	Proposal	Existing	Proposal	Baseline	Existing 06/07	Proposal 07/08	Proposal 08/09
To set baseline and targets	To empower local people to have a greater voice and influence over local decision making and the delivery of services	No change	No change	No change	49% (baseline from unverified data from BVPI survey)	Targets will be set by Stronger Communities Forum by 31st Jan 2007	Targets will be set by Stronger Communities Forum by 31st Jan 2008	Targets will be set by Stronger Communities Forum by 31st Jan 2009
Align target in line with data available	Increase participation of adult population in physical activities	No change	Proportion of people who engage in at least 30 minutes of moderate intensity level physical activities at least five times a week.	Proportion of people who engage in at least 30 minutes of moderate intensity level physical activities at least three times a week.	1% increase in the percentage of the population taking part in at least moderate intensity activities and recreation for at least 30 minutes duration 3 days a week from a baseline gathered in the Active People survey later in 2006			
Evidence has supported our conclusion that there is no need for a revised accommodation standard. The target has been made more specific to reflect initial research	Increase Oxfordshire's GVA by developing tourism	To increase the number of staying visitors within the county, increase the money spent and length of stay by (amongst other methods) re-branding the county.	N/A	The number of visitors, the average length of stay and the total spend to be based upon baseline indicators by established by Tourism working group by 31st March 2007	Increase % in number of visitors, average length of stay and total spend to be set once baselines are established by end Apr 2007	to be set end Apr 07	to be set end Apr 07	to be set end Apr 07

Safer Communities outcomes have been reworked to add clearer focus. Please refer to annex 1 attached for details of outcomes and indicators

3. Proposed pooled funding

This section is to be used to record proposals for pooled funding in 2007/08

Oxfordshire LAA- Annual Refresh 2006

Funding Stream(s)	Previously pooled Y/N	Amount £ 07/08 (Capital)	Amount £ 07/08 (Revenue)	
Automatically pooled funding				
Children's Services Grant	N		1,585,554	100% grant
Key Stage 3- Behaviour and Attendance	N		183,300	100% grant
Key Stage 3- Central Coordination	N		297,221	50% grant 50% OCC
Positive Activities for Young People	N		177,951	06/07 budget
Primary Strategy Central Coordination	N		309,938	50% grant 50% OCC
School Travel Advisors	N		92,000	100% grant
School Development Grant (LA retained element only)	N		1,835,152	100% grant
Anti-Social Behaviour Grant	Yes		125,000	
Building Safer Communities	Yes	201,374	544,454	
Drugs Strategy Partnership Support Grant	Yes		89,018	
Rural Social and Community Programme	N		£134,448.03	Passported direct to ORCC
Waste Performance and Efficiency Grant	Not actually pooled although all the Oxfordshire Authorities have ring fenced their WPEG money for waste management and partnership projects.	£678.5K (OCC- £390,962.88 Cherwell- £60,704.79 Oxford- £71,370.69 South- £58,315.15 Vale- £52,757.44 West- £44,378.69)	£678.5K (OCC- £390,962.88 Cherwell- £60,704.79 Oxford- £71,370.69 South- £58,315.15 Vale- £52,757.44 West- £44,378.69)	Total £1.357M Assuming a 50:50 split)
Other pooled funding through LAA				
Connexions	N		4,931,800	
Children's Fund	N		868,626	
Teenage Pregnancy Grant	N		(indicative) 160,000	

4. Reward Element

Oxfordshire LAA Target 10 Affordable Housing – final version

Deliver 256 additional affordable homes within sustainable communities across Oxfordshire between 2006/7 and 2008/9, of which 70% will be social rented housing and 30% will be low cost home ownership units.

Indicator by which performance will be measured

The number of affordable housing units provided across Oxfordshire, through the Oxfordshire Housing Partnership (other than those provided with Housing Corporation funding or through S106 planning obligations), as measured by the number of dwellings started on site plus exchanges of contract on acquisitions of existing dwellings

Current Performance (year end 31 March 2006)

No affordable housing units were provided through the Oxfordshire Housing Partnership

Performance at the end of the period of the Local Area Agreement (three year cumulative for 2006/2007, 2007/2008 and 2008/2009 ending year ending 31 March 2009)

Performance expected without the reward element

No additional affordable housing units will be delivered through the Oxfordshire Housing Partnership (excluding units provided with Housing Corporation funding or through section 106 planning obligations)

Performance expected with the reward element

256 additional affordable housing units will be delivered through the Oxfordshire Housing Partnership (excluding units provided with Housing Corporation funding or through section 106 planning obligations)

Enhancement in performance with the reward element

An additional 256 affordable housing units will be delivered through the Oxfordshire Housing Partnership (excluding units provided with Housing Corporation funding or through section 106 planning obligations)

Allocation of Performance Reward Grant

£1,476,465

The total PRG allocated to this target is £1,476,465. Performance Reward Grant will be payable, on a pro-rata basis once 60% (154) has been met. If the 60% threshold is met, £885,879 will therefore be payable. For full reward grant entitlement, at least 65% of the enhancement delivered for this target through the Oxfordshire Housing Partnership must relate to social housing. Where the proportion of the target that is social rented falls below 65% a reduction will be made to the reward payable; this will equate to £6,775 for each dwelling that social rented outputs falls below 65%.

For example, if 154 additional units are delivered, 60% of the reward grant (£885,879) will be paid in full if 100 or more dwellings are social rented; if only 92 (60%) are social rented the reward will be reduced by £54,200 (£6,775 x 8).

As a second example, if 256 additional units are delivered, 100% of the reward grant (£1,476,465) will be paid in full if 166 or more dwellings are social rented; if only 128 (50% are social rented, the reward will be reduced by £257,450 (£6,775 x 38).

Notes

Through the Housing Corporation programme and s106 agreements 1261 affordable homes, of which 766 were social rented, were completed/acquired across Oxfordshire over the three year period from 2003/2004 to 2005/2006.

Definitions

1. An **affordable home** is a dwelling unit that is let on an assured or secure tenancy, where the rent does not exceed:

- (a) any target rent for the property set by the Housing Corporation; or
- (b) 75% of market rent.

2. Open Market HomeBuy - an equity loan is provided by an RSL so that eligible applicants initially purchase up to 75% of the equity in a property of their own choice from the open market, raising their own mortgage, subject to criteria specified by the Housing Corporation. The remaining 25% is funded through an interest-free equity loan. The loan is repayable at market value when the property is eventually resold.

3. New Build HomeBuy - homes are sold on a leasehold basis to eligible applicants on a part buy/ part rent basis. The initial share purchased is flexible between 25% and 75% and occupants may staircase to full ownership. The rent payable in relation to the rented share of the property fulfils the rental conditions for affordable properties in relation to that share. In most cases the RSL places a charge on the property requiring it to be offered back for sale to another Homebuy applicant.

4. Do It Yourself Shared Ownership - The DIYSO scheme is funded by Councils. It enables eligible applicants to purchase a property of their choice from the open market, subject to criteria specified by the Council. The landlord purchases the property chosen by the applicant, and sells a leasehold share back to the applicant. The share purchased is initially normally 50% and the applicant may staircase to full ownership. The applicant pays rent on the share owned by the landlord, whilst paying a mortgage on the 50% share they own. The rent payable in relation to the rented share of the property fulfils the rental conditions for affordable properties in relation to that share. In most cases landlords place a charge on the property requiring it to be offered back for sale to another DIYSO applicant.

5. Measure of Start on Sites - This will be recorded as the start date recorded in the signed build contract. A build contract will be entered into by the LA's partnering RSL and its contractor or between a developer and the partnering RSL. The build contract stipulates the intentions and expectations of both parties, providing details of what housing is due to be constructed. Evidence of the affordable housing due to be delivered will be provided from the build contract. As an additional measure, the start on site date will be evidenced further by providing a copy of first valuation payment made on the contract. Generally this payment is generated by the main contractor one month into the build, covering the cost of works undertaken at this point. The provision of evidence demonstrating this first valuation payment will serve to demonstrate the start on site date as well as proving that work has commenced

Annex 1: Safer Communities Block

The block has been refreshed for a number of reasons:

- To rationalise existing targets into the mandatory indicators. The original block contained targets relating to anti-social behaviour in three separate objectives. These have been brought into one.
- To remove action statements. Contained in the block were indicator and target statements that were actually more detailed actions or tasks. These are not necessary for this high level document.
- To ensure all targets have an indicator and vice versa. There were targets in the original block that had no indicator, and this has been corrected. Similarly, there were a number of indicators with no targets.
- To provide more clarity on the arson reduction target. The definition of arson: deliberate primary and secondary fires are a more accurate statement, as arson only relates to successful police prosecutions.

Community Safety

1. The overarching outcome to be achieved in relation to Safer Communities is:
 - To reduce crime, the harm caused by illegal drugs, and to reassure the public, reducing the fear of crime; and
 - To build respect in communities and to reduce Anti-Social Behaviour.
2. The Government published the Respect Action Plan in January 2006. The Action Plan includes themes around constructive and purposeful activities for children and young people, support for families, strengthening communities, and effective enforcement. These themes are represented across the LAA. Specific targets which will contribute to this Action plan include:

In Children and Young Persons block:

- Improving early, integrated, practical support & take up of childcare for vulnerable families
- Increased achievement of looked after children
- Achievement of vulnerable groups focussing on young offenders
- To increase the effective participation of children and young people and ensure that it is well co-ordinated

In Safer and Stronger Communities block:

- Reduction in offending by young people
- Reduction in harm caused by substance misuse in young people
- Reducing crime
- Reducing fear of crime
- Reducing antisocial behaviour
- Increasing public reassurance

3. Our aim is to build on the work of the five district based Crime & Disorder Reduction Partnerships (CDRPs), The Drugs and Alcohol Action Team and the Youth Offending team, to address crime and anti-social behaviour by targeted action and a focus on the under-lying causes. In doing so we are conscious that most young people are more likely to be victims of crime than perpetrators of crime. However, the action listed below is aimed at dealing with the small minority of young people who engage in criminal activity or anti social behaviour, or who are in danger of being drawn into such activity.
4. The five Oxfordshire CDRPs have been set a target of reducing crime (British Crime Survey Comparator crimes) by an average of 16.1% by 2007/08. No overall stretch for this target is proposed, but key identified priorities will undoubtedly contribute to its achievement.
5. For 2006/07, SSCF funds will be passported direct to CDRPs and arrangements for future years will be considered by the Oxfordshire Safer Communities Partnership established to oversee the Safer Community element of the LAA. 27% of Building Safer Communities fund will be allocated for capital expenditure.

The **stretch targets** are listed below:

Outcomes	Indicators	Stretch Target	Funding streams contributing to outcomes
Reduction in offending by young people	(1) Number of new entrants to criminal justice system aged 10-17 years (2) Rate of reconviction of young offenders aged 10-17 years (Both indicators are required performance measures by the YJB – first is returned quarterly,	(1) Reduce the number of entrants aged 10-17 years to the criminal justice system from a baseline of 1,226 to 1,079 entrants by March 2009 (2) Reduce re-offending by young offenders from a baseline of 156 young offenders re-offending to not more than 144 by March 2009.	YOT Budget PAYP Children's Fund Thames Valley Police Mainstreaming

Oxfordshire LAA- Annual Refresh 2006

Outcomes	Indicators	Stretch Target	Funding streams contributing to outcomes
	second is returned annually)		funding Safer and Stronger Communities Fund
To lower the incidence of domestic violence by promoting early disclosure, effective response to disclosure and ready access to resources to increase the safety of victims.	(1) Number of reports of Domestic Violence incidents to the police (2) Number of incidents of domestic violence which result in sanction detections ¹ (Both indicators report monthly to TVP Performance Group and reviewed by all CDRPs) <u>Non-stretch indicator</u> Number of trained Champions	(1) Increase the number of incidents of domestic violence reported annually to the police from a baseline of 5,495 offences in 2004/5 to 6,564 offences by March 2009. (2) Increase the number of sanction detections for Domestic Violence offences from a baseline of 1,056 sanction detections in 2004/05 to 1,744 by March 2009. <u>Non-stretch target</u> Increase the number of trained Champions by 100 to 150 in March 2009	Safer and Stronger Communities Fund Thames Valley Police funding
Reduce the rate of re-offending by adult and juvenile Prolific & Priority Offenders (PPOs)	The number of convictions resulting from charges for British Crime Survey (BCS) comparator crimes for offenders identified as PPOs.	Reduce the number of convictions resulting from charges for BCS crimes for offenders identified as PPOs from a baseline of 479 convictions to 340 convictions by March 2009.	Safer and Stronger Communities Fund BCU fund

6. We will review the need for further LAA targets when we roll forward the LAA next year.

7. The **non-stretch targets** are:

Outcomes	Indicators	Targets	Funding Streams contributing to Outcome
Reassure the public, reducing the fear of crime	Reduce the fear of crime Baseline to be advised at six month review	Reduce the percentage of people who feel that fear of crime affects their quality of life. Question, based on Oxford City's survey, to be added to 2007 countywide Citizens' Panel Survey. Baseline to be established during 2007/08. Targets for 07/08 to be advised at the six month review	LA (OCC) and TVP mainstream funding BCU Funding SSCF HO ASB Funding
	Percentage of people who feel safe when alone after dark in their local community.	Increase the percentage of people who feel safe 'walking alone in their local community after dark' by 2009 by 1% per annum. Baseline: 2006 Citizen's Panel Survey: 70% Increase by 1% per annum	
Build respect in communities and reduce anti-social behaviour	Percentage improvement in the degree to which people feel informed about efforts by the local council to tackle anti-social behaviour	Question to be added to 2007 countywide Citizen's Panel Survey. Survey to be conducted annually. Baseline of 16% is taken from LGUSS 2006/07 Increase the percentage of respondents who feel informed about what is being done to tackle anti-social behaviour in their area by 1% per annum 1% increase per annum	

¹ Sanction detections are crimes for which someone is charged, summonsed, receives a caution or other formal sanction
21.03.07

Outcomes	Indicators	Targets	Funding Streams contributing to Outcome																								
	<p>Percentage improvement in the degree to which people feel that in their local area parents take responsibility for the behaviour of their children</p>	<p>Question to be added to 2007 countywide Citizen's Panel Survey. Survey to be conducted annually. Baseline of 47% taken from LGUSS 2006/07</p> <p>Reduce the percentage of people in the local area who perceive parents NOT taking responsibility for the behaviour of their children by 1%</p> <p>1% decrease per annum</p>																									
	<p>Percentage improvement in the degree to which people feel that people in their local area treat one another with respect and consideration</p>	<p>Question to be added to 2007 countywide Citizen's Panel Survey. Survey to be conducted annually.</p> <p>Decrease the percentage of people in the local area who perceive people NOT treating one another with respect and consideration as a fairly or very big problem by 1% per annum, based on a baseline of 33% taken from the LGUSS 2006/07</p> <p>1% decrease per annum</p>																									
	<p>Reduce people's perception of ASB:</p> <ol style="list-style-type: none"> 1. Noisy neighbours or loud parties 2. Teenagers hanging around on the streets 3. Rubbish and litter lying around 4. People being drunk or rowdy in public spaces 5. Abandoned or burnt out cars 6. Vandalism, graffiti and other deliberate damage to property or vehicles 7. People using or dealing drugs 	<p>Countywide Citizens' Panel Survey Sept 06 results were as follows:</p> <table border="1" data-bbox="655 902 1166 1178"> <thead> <tr> <th data-bbox="655 902 831 1178">Percentage of respondents to Citizens' Panel survey who see issue as problem</th> <th data-bbox="831 902 986 1178">ASB score based on responses to Citizens' Panel</th> <th data-bbox="986 902 1166 1178">Local Government User Satisfaction Survey (LGUSS) 2006/07 Percentages</th> </tr> </thead> <tbody> <tr> <td data-bbox="655 1178 831 1223">1. 12%</td> <td data-bbox="831 1178 986 1223">(0.58)</td> <td data-bbox="986 1178 1166 1223">13%</td> </tr> <tr> <td data-bbox="655 1223 831 1267">2. 29%</td> <td data-bbox="831 1223 986 1267">(1.07)</td> <td data-bbox="986 1223 1166 1267">45%</td> </tr> <tr> <td data-bbox="655 1267 831 1312">3. 39%</td> <td data-bbox="831 1267 986 1312">(1.35)</td> <td data-bbox="986 1267 1166 1312">38%</td> </tr> <tr> <td data-bbox="655 1312 831 1357">4. 19%</td> <td data-bbox="831 1312 986 1357">(0.89)</td> <td data-bbox="986 1312 1166 1357">29%</td> </tr> <tr> <td data-bbox="655 1357 831 1402">5. 11%</td> <td data-bbox="831 1357 986 1402">(0.58)</td> <td data-bbox="986 1357 1166 1402">9%</td> </tr> <tr> <td data-bbox="655 1402 831 1447">6. 27%</td> <td data-bbox="831 1402 986 1447">(1.09)</td> <td data-bbox="986 1402 1166 1447">29%</td> </tr> <tr> <td data-bbox="655 1447 831 1491">7. 35%</td> <td data-bbox="831 1447 986 1491">(1.26)</td> <td data-bbox="986 1447 1166 1491">26%</td> </tr> </tbody> </table> <p>Citizens Panel 06 Survey combined overall ASB baseline score is based on average for all respondents from Sept 06 Citizens' Panel Survey: = 6.82</p> <p>For more detailed information on how this score was calculated please see Annexe 1a</p> <p>LGUSS baseline figure is 18% (percentage of respondents with a score of 11 or more, where 11 equals a high level of perceived ASB)</p> <p>Targets</p> <p>1% decrease per annum on overall Citizens Panels score and LGUSS percentage figure</p>	Percentage of respondents to Citizens' Panel survey who see issue as problem	ASB score based on responses to Citizens' Panel	Local Government User Satisfaction Survey (LGUSS) 2006/07 Percentages	1. 12%	(0.58)	13%	2. 29%	(1.07)	45%	3. 39%	(1.35)	38%	4. 19%	(0.89)	29%	5. 11%	(0.58)	9%	6. 27%	(1.09)	29%	7. 35%	(1.26)	26%	
Percentage of respondents to Citizens' Panel survey who see issue as problem	ASB score based on responses to Citizens' Panel	Local Government User Satisfaction Survey (LGUSS) 2006/07 Percentages																									
1. 12%	(0.58)	13%																									
2. 29%	(1.07)	45%																									
3. 39%	(1.35)	38%																									
4. 19%	(0.89)	29%																									
5. 11%	(0.58)	9%																									
6. 27%	(1.09)	29%																									
7. 35%	(1.26)	26%																									

Oxfordshire LAA- Annual Refresh 2006

Outcomes	Indicators	Targets	Funding Streams contributing to Outcome
Reduce the harm caused by illegal drugs	Reduce public perception of local drug dealing and drug use as a problem	Based on countywide Citizens' Panel Survey (2006), 35% of residents are worried by people using or dealing drugs in their neighbourhood. 18% are aware of seeing people using or dealing in their neighbourhood - Citizens' Panel Survey (2006) LGUSS baseline is 26%. 1% decrease per annum on overall Citizens Panels score and LGUSS percentage figure	Aligned to YP Substance Misuse Grant and DAAT Partnership Support Grant
	Number of young people in treatment as measured by NDTMS	Increase the number of young people accessing treatment by 2008/09 on a baseline to be established during 2006/07; targets to be added when baseline established at 6 month review	
	Police, Probation and all CDRPs working together to reduce drug-related offending through the Drugs Intervention Programme (DIP)	There are draft targets for 2007/08 to be drawn on, when confirmed, at 6 month review	
Reduce alcohol-related harm and anti-social behaviour	Reduce the percentage of the population who perceive 'People being drunk or rowdy in public' is a problem.	Reduce the percentage of the population who perceive 'People being drunk or rowdy in public' is a problem. Baseline: 2006 CP Survey: 19%. LGUSS baseline 2006/07 29% 1% decrease per annum on Citizens Panel and LGUSS percentage figures	Mainstream funding SSCF Licensing Authority (LA) funding
	By implementing the Oxfordshire Alcohol Harm Reduction Strategy, increase participation in adult alcohol community treatment services.	Initiate prototype community alcohol treatment services by January 07. 50 individuals to be seen by end of March 2008 15% increase (8 individuals) on the above by end of March 09. Identify funding to initiate a pilot Alcohol Arrest Referral Scheme countywide in April 2007 to address hazardous drinking. * Pilot operational by April 07 * 250 individuals through the scheme by March 2008 * 30% increase (75 individuals) on the above by March 2009	

Oxfordshire LAA- Annual Refresh 2006

Outcomes	Indicators	Targets	Funding Streams contributing to Outcome
Reduce crime	Reduction in overall British Crime Survey Comparator crimes: 1. theft of vehicle 2. theft from a vehicle 3. vehicle interference 4. domestic burglary 5. theft of cycles 6. theft from person 7. criminal damage 8. common assault 9. woundings 10. robbery	Reduce BCS Comparator crimes in Oxfordshire by 16.1% from 30,240 in 2003-04 to 25,366 in 2007-08. - 05/06 27, 882 BCS crimes - 06/07 26, 613 BCS crimes - 07/08 25,366 BCS crimes	SSCF BCU
	Reduce the proportion of adult and young offenders, and prolific and other priority offenders who re-offend	Target details in stretch target section above (ref targets 1+3)	
Reduce the level of non-accidental fires (arson)	Reduction in incidents of arson. Primary fires are fires in buildings and structures (domestic and commercial) and include vehicle fires. These are reported to central government on a specific Fire Damage Report form (FDR1) Secondary fires are fires involving grass, rubbish and waste (bins and skips etc) which do not involve structures, buildings or vehicles (except abandoned vehicles) and are often directly linked to Anti-social behaviour problems in neighbourhoods.	Reduction of 10% in the number of primary and secondary deliberate fires by March 2009 from a 2004-05 baseline of 1557. - 2006/07: 1491 - 2007/08: 1451 - 2008/09: 1401	LA mainstream funding (Fire Authority) and a proportion of DCLG Government Fire Safety Grant 06/07 for arson reduction.

8. No **enabling measures** requested.

9. The responsible officer for this block is Mike Simm, Oxfordshire County Council.

Annex 1a: Safer Communities Anti-social behaviour score

	Very Big Problem	Fairly Big Problem	Not a very big Problem	Not a problem at all	Don't know	Score/ Response	% or Score
ASB	<i>% or number or score</i>	<i>% or number or score</i>	<i>% or number or score</i>	<i>% or number or score</i>	<i>% or number</i>		<i>% or score</i>
Vandalism	7% 137 411	20% 392 784	45% 882 882	25% 490 0	3% 59	2077/1900	27% or 1.09
Young People	7% 137 411	22% 431 862	40% 784 784	29% 568 0	2% 39	2057/1920	29% or 1.07
Rubbish	10% 196 588	29% 568 1136	44% 862 862	16% 313 0	2% 39	2586/1920	39% or 1.35
Drug Use	10% 196 588	25% 490 980	36% 705 705	22% 431 0	8% 157	2273/1802	35% or 1.26
Drunk	5% 98 294	14% 274 548	43% 842 842	35% 686 0	3% 59	1684/1900	19% or 0.89
Noisy Neighbour	2% 39 117	10% 196 392	31% 607 607	56% 1097 0	2% 39	1116/1920	12% or 0.58
Abandoned cars	2% 39 117	9% 176 352	32% 627 627	53% 1038 0	4% 78	1096/1881	11% or 0.58

Total ASB Score 6.82

Annex 1b: The Oxfordshire Citizens' Panel

Overview

The Oxfordshire Citizens' Panel was established in mid 2000. It is a research panel whereby panel members receive up to four postal 'omnibus' surveys a year, which contain questions on a variety of different subjects. There is a regular programme of research and each survey is followed-up with a newsletter providing both a summary of the findings and a response from the council. In addition to completing postal surveys, Citizens' Panel members are periodically invited to participate in other consultations (e.g. group discussions, workshops, usability testing etc.)

Recruitment

The original 1,000 member panel was set up using a list of volunteers gleaned from previous county council consultations and a bespoke postal recruitment exercise. As was expected, the list of volunteers generated was not representative of the local population; and in particular older people were over represented at the expense of young people. To address this issue, a smaller sub-sample of volunteers was drawn, at random, in order to form the panel proper. Census projections provided by the council's demographic adviser were used to 'balance' the panel, district by district, with regard to gender, age, ethnicity, and working status. The panel composition is therefore representative of adult population of the county as a whole.

Increasing the Size of the Panel and on-going Panel Refreshment

In summer 2004, the Citizens' Panel membership was increased to 3,000 to enable the council to analyse the survey findings in greater depth. A face-to-face interview survey was used to secure more volunteers and a similar panel balancing exercise as before was employed.

Throughout the lifetime of the panel we have employed a systematic refreshment process. This is to ensure that we address issues of non-response and to avoid the risk of individual panel members becoming 'experts' about the council. Approximately a third of the Citizens' Panel is replaced each year and in general panel members serve no longer than three years.

Weighting the Panel Data

Unless otherwise stated, all of the survey data received via the panel is weighted by a combination of three variables (age, gender & district) on a 'cell by cell' basis to reflect the demographic profile of the panel. It should however be noted, that although weighting factors are applied assuming a panel of 3,000 members, if the council does not receive any valid returns from specific weighting cells the final weighted data will be reduced by the according amount. Great care is undertaken to ensure that individual respondents cannot unduly influence the results of the survey through the weighting process. With this in mind, we try not to apply a weight greater than 10.

Carole Dixon
Consultation & Marketing Manager
Communications & Marketing Unit

Annex 2:

Health inequalities target: To reduce health inequalities within the local area (Oxfordshire) by narrowing the gap in all-age, all-cause mortality.

Suggested baseline 1995-97 with an end point of 2009-2011 and a reduction of 10%.

Directly age-standardised rates were calculated for all wards in Oxfordshire. Wards were split into equal quintile groups with between 27 and 29 in each group, ensuring that for all years there were the same number of wards in quintile groups 1 and 5².

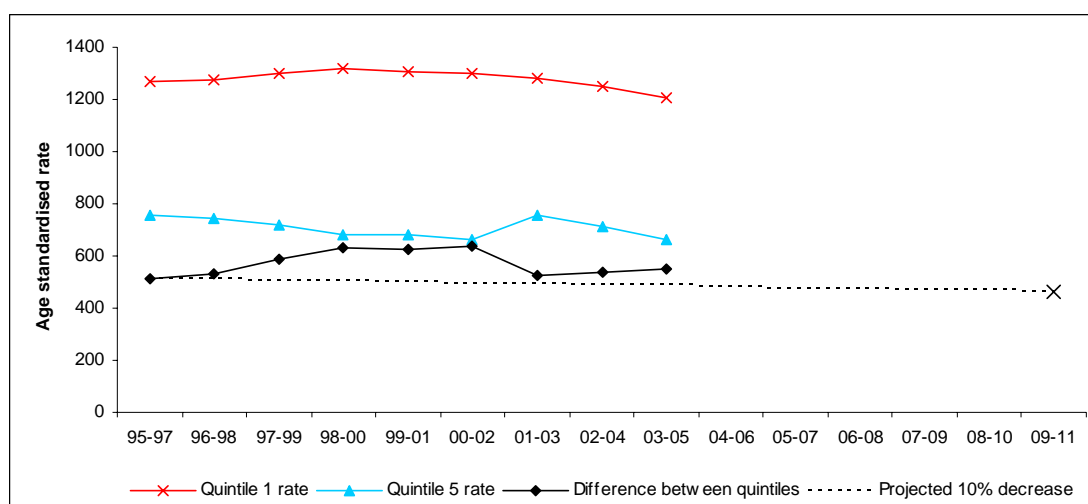
The first two columns of the table below show actual mortality rates of wards contained in quintile groups one and five³ up to and including 2003-05. The third column shows the difference between these two values. The final column, "Target", is based on a 10% reduction on the difference in 1995-97 by 2009-11.

The data is also represented in a chart below.

Directly age-standardised mortality rates (by ward) - Oxfordshire - Quintiles 1 and 5 rates

	Quintile 1	Quintile 5	Difference	Target
95-97	753.77	1268.58	514.82	514.82
96-98	744.62	1276.57	531.95	511.14
97-99	716.11	1303.11	587.00	507.46
98-00	683.65	1317.93	634.28	503.78
99-01	679.88	1306.28	626.40	500.11
00-02	663.64	1299.56	635.92	496.43
01-03	756.96	1282.81	525.86	492.75
02-04	714.19	1248.93	534.74	489.08
03-05	659.40	1207.37	547.97	485.40
04-06				481.72
05-07				478.04
06-08				474.37
07-09				470.69
08-10				467.01
09-11				463.34

Rates indicate the number of deaths per 100,000 people in the relevant time period in the standard population (e.g. in 1995-97, quintile group 1 (753.77) indicates there would be 754 deaths per 100,000 people in the England and Wales population during that time period if they experienced the same age-specific mortality rates as observed in that quintile).



Source of population data: CACI ward projections (1995-97 to 2000-02); Oxfordshire County small area projections (using GLA model) (2001-03 to 2003-05); ONS (England & Wales populations).

Source of mortality data: ONS Public Health Mortality File for Oxfordshire

² For data prior to 2001, there were 144 wards in Oxfordshire, therefore 29 wards in each of the quintile groups 1 and 5. Data for 2001 onwards is based on 136 wards in place in 2003, therefore quintile groups 1 and 5 contain 27 wards.

³ Quintile group 5 contains the highest mortality rates, quintile group 1 contains the lowest mortality rates.

Annex 3:**Baseline for Common Referral and Assessment Process****Non-stretch target in Healthier Communities and Older People block**

Outcome	Indicator	Target	Funding stream
<p><i>Integrated approach to preventive services and intermediate care across agencies:</i></p> <p>Establishing a countywide common referral and assessment process for preventive services</p>	Expansion of the current range of referral for prevention services including home safety equipment, small repair, smoke alarm and information on other services	20% increase in number of referrals from various agencies each year (Baseline will be from Fire Service provision of smoke alarms on referral from other agencies, available in April 06. Other agencies receiving referrals are Small Repairs Scheme, Falls Prevention Service, and Message in a Bottle. All agencies will collaborate to identify milestones by September 06.)	

Target is a combination of activity from 3 sources

	Baseline 05-06	Target by 2009	Interim target 2006-07	Interim target 2007-08
Fire Service referrals from other agencies	50 referrals per month (resulting in 50 fire risk assessments and 90 smoke alarms fitted). Total 600 per year	720 per year	640 per year	680 per year
Anchor Staying Put. Referrals or enquiries received	Apr – Sept 2006 total enquiries in Oxfordshire = 1617. Total 3200 for year	3840 per year	3415 per year	3630 per year
Electric blanket testing	Total number of blankets tested in 2004 was 303	363 per year	323 per year	343 per year